

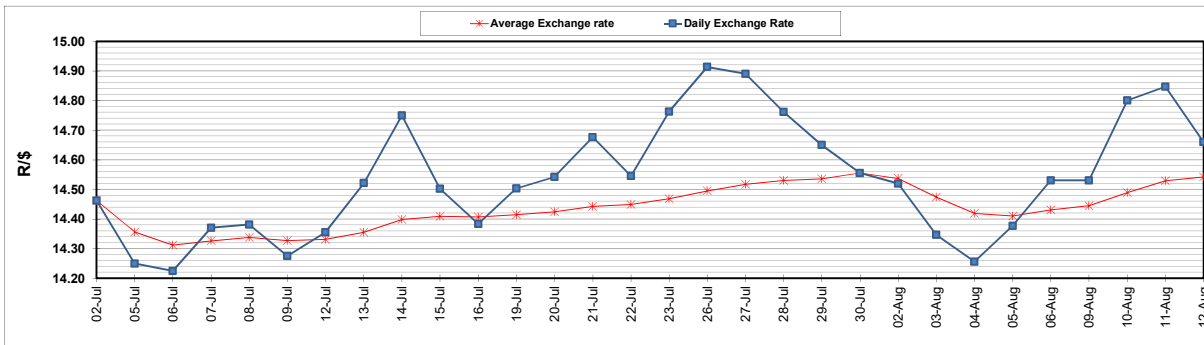
	PETROL 95 ULP	PETROL 93 ULP & LRP	DIESEL 0.05%	DIESEL 0.005%	ILL. PAR.
GAUTENG PUMP PRICE (SA c/l) AS FROM 04/08/2021	1,830.000	1,811.000	-	-	-
WHOLESALE PRICE (SA c/l) AS FROM 04/08/2021	-	-	1,564.200	1,566.600	963.488
SINGLE NATIONAL MAXIMUM RETAIL PRICE	-	-	-	-	1,217.000
BASIC FUEL PRICE - 12/08/2021 (SA c/l)	812.460	798.156	742.187	745.437	725.695
PRESS RELEASE CONTRIBUTION TO BFP 04/08/2021 - 12/08/2021 (SA c/l)	827.590	818.590	770.630	773.030	750.128
UNIT OVER/(UNDER) RECOVERY - 12/08/2021 (SA c/l)	15.130	20.434	28.443	27.593	24.433
AVERAGE BASIC FUEL PRICE 30/07/2021 - 12/08/2021	810.429	797.068	745.003	747.857	729.189
AVERAGE UNIT OVER/(UNDER) RECOVERY 30/07/2021 - 12/08/2021	(8.165)	(3.804)	10.927	10.773	5.939

ANALYSIS MOVEMENT OF AVERAGE OVER/(UNDER) RECOVERY

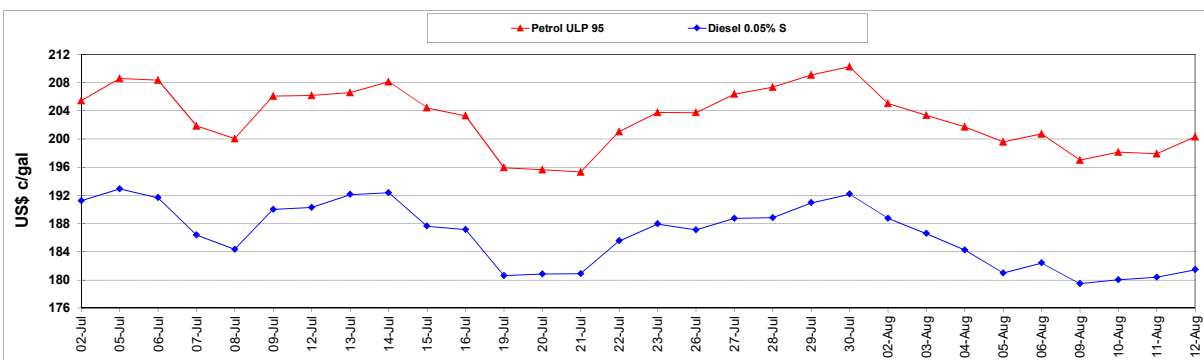
	PETROL 95	PETROL 93	DIESEL 0.05%	DIESEL 0.005%	ILL. PAR.
- MOVEMENT IN INTERNATIONAL PRODUCT PRICES	(7.819)	(3.464)	11.245	11.092	6.250
- MOVEMENT IN EXCHANGE RATE	(0.346)	(0.340)	(0.318)	(0.319)	(0.311)
AVERAGE UNIT OVER/(UNDER) RECOVERY 30/07/2021 - 12/08/2021	(8.165)	(3.804)	10.927	10.773	5.939

R/\$ EXCHANGE RATE - (R/\$14.6600- 12/08/2021)

EXCHANGE RATE USED IN BASIC FUEL PRICE



INTERNATIONAL PRODUCT PRICES OF BASKET USED IN BASIC FUEL PRICE



BASIC FUEL PRICE IN SA CENTS PER LITRE

